



MONTHLY MEMBERSHIP PROGRESS REPORT

District 27 A1

Results as of: 2/29/2016

GMT: Judy Hankom

LOCATION WISCONSIN

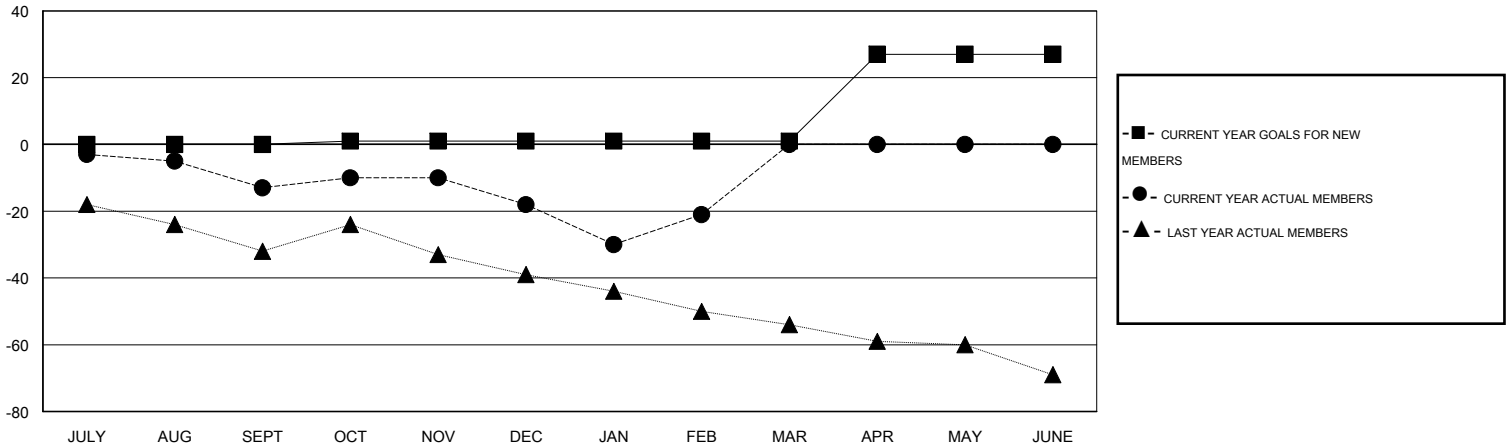
GMT CA 1

Clubs					Members				
RESULTS FOR 2015-2016					RESULTS FOR 2015-2016				
QUARTER	NEW CLUB GOAL	NEW CLUBS	DROPPED CLUBS	NET GAIN/LOSS	QUARTER	NEW MEMBER GOAL	CHARTER AND NEW MEMBERS ADDED	DROPPED MEMBERS	NET GAIN/LOSS
JULY/AUG/SEPT	0	0	0	0	JULY/AUG/SEPT	0	25	38	-13
OCT/NOV/DEC	0	0	0	0	OCT/NOV/DEC	1	36	41	-5
JAN/FEB/MAR	0	0	0	0	JAN/FEB/MAR	0	25	28	-3
APR/MAY/JUNE	1	0	0	0	APR/MAY/JUNE	26	0	0	0

GOALS AND ACTUAL NEW CLUBS CUMULATIVE



GOALS AND ACTUAL MEMBERS CUMULATIVE



DROPPED CLUBS: 0	35 CLUBS OF 50 ADDED 1 OR MORE NEW MEMBERS	<u>GENDER DISTRIBUTION</u>			
<u>DROPPED MEMBERS</u>		MALE	1,414 (82.74%)		
DECEASED	12	FEMALE	295 (17.26%)		
CLUB CANCELLED	0	CLICK HERE FOR HEALTH ASSESSMENT DATA			
OTHER	93			FAMILY UNIT MEMBERS	226
TOTAL	105			HEAD OF HOUSEHOLD	106
		NON-HEAD OF HOUSEHOLD	120		